

Reflex

---

# **GAS MANAGEMENT**



# SAY GOODBYE TO SEPARATE SYSTEMS AND SPREADSHEETS WITH A ONE-STOP SHOP FOR GAS MANAGEMENT

Reflex Gas Management was developed to help gas co-operatives streamline their business. The Gas Management module provides accurate and easy gas balancing, efficient reporting of gas usage and a full history of prior agreements by service location in addition to typical features such as maintenance of meters. Gas Management is part of the Reflex Suite of products, which allows gas co-ops to run a single software system that manages all aspects of their business.

## Member Management Made Easy

Reflex Gas Management gives gas co-ops the ability to manage their member data with ease. Manage move in's and move out's, meter readings, equalization, financials, portal access, and more – all in one single solution. Reduce time spent each month on the gas billing cycle by automating recurring processes. Members can also log in to a personalized portal to review their billing and historical consumption details.

## A/R Collection Module Integration with Service Orders

The AR collection process is made easier with a full audit trail. From registered letter to tagging, locking, caveats, removal of meter and final status of uncollectable or send to collections, the AR process creates a data trail that is visible throughout the entire gas management module. This means that reporting on AR issues is easily generated through a variety of standard reports. Service orders automatically instruct resources to take the next step in the process without any duplication of entry into siloed systems. The full audit trail provides a useful history should the account go to a collection agency or if legal action is taken.

## Member Financing

Reflex offers gas co-ops the ability to finance the principle and interest for new member or service location of gas lines. These can be amortized over several months and the monthly amount will be shown on the monthly gas bill for the member.

## An Audit Trail For Enhanced Transparency

Transparency is important, especially in regulated, member driven organizations. Reflex records who made changes to data, what was changed and when. The system records and retains both the original value as well as the updated value for critical data points. Users are also required to enter a reason for making the change which means that information is fully auditable.

### Accounts Receivable Collection Module

Configurable dashboards

Member Data Quick Look Up  
Agreements/Contract

Forecast & Actual Gas Billing runs

Equalization of Billings

### Meter Read Import/Export (iTron AMR)

DEFT Set Up

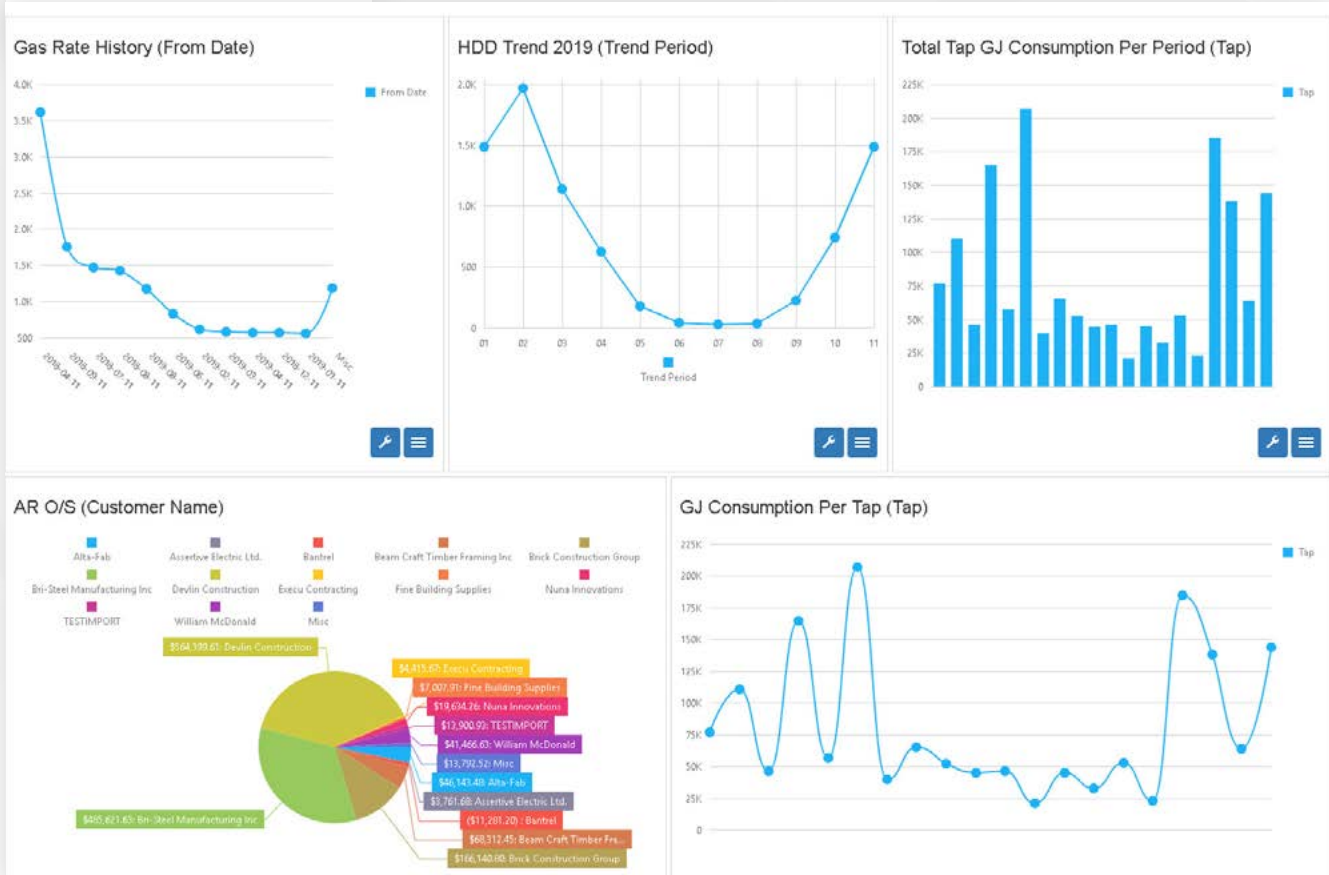
User Defined Queries

Centralized Member Management

Customer Payment Counter Receipts

*plus dozens of other features that will improve your workflow*

## Your Dashboard



Data can be trended across various time periods and plotted against various data points.

## Meet PATI



**PATI (Process Assistant and Training Instructor) lives throughout the Reflex system. She helps users quickly walk through a range of processes by guiding them through a series of logical steps.**

In Reflex Gas Management, PATI allows a user to generate gas billings through four different screens, all wrapped into a single process. As the user moves to the next screen, they are presented with additional information to review and validate that the data is correct. PATI will also assist the user in identifying GJ consumption that may be on the higher side based on last year's same month or the previous month as well as any pertinent information such as AR Aging and Service order notes. Reflex includes about 400 PATIs throughout the application to streamline various daily or monthly processes.



@reflexerp



Reflex Enterprise Solutions Group Inc.



facebook.com/reflexerp



www.ReflexERP.com