

# Reflex Distribution

ERP Overview





## What is Enterprise Resource Planning software and why do I need it?

A modern solution—one that offers real-time data management, full and extensive integration throughout all of its programs, embedded analytics, and mobile access—can significantly improve a company's efficiency and productivity, helping taking business growth to the next level.

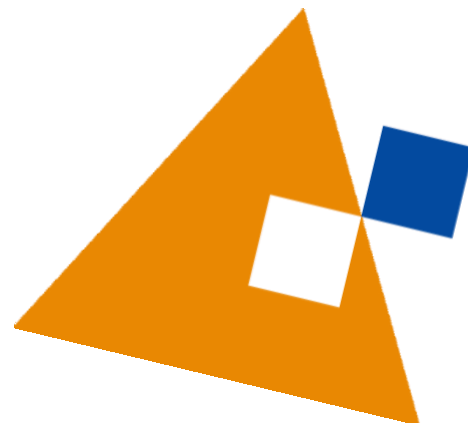
When you choose the Reflex ERP, you're choosing a next generation system—a personalized software solution that caters directly to the distribution industry.

More than anything, we believe that delivering the right ERP solution is the key to each company's success.

Tailored for distribution organizations, Reflex is an easy to use but high performance software solution that helps companies stay on top of orders, manage the cost of inventory, and support the efficient and effective distribution of goods.

Flexible and powerful, Reflex Distribution uses real-time data capture functionality to improve productivity and manage end-to-end supply chain processes.

Experience a modern ERP system with advanced functionality for improving business operations, employee productivity, and overall profit.



## One solution is all you need



### Lean Enterprise

Build a more efficient and effective sustainable organization with electronic document management, web portals, reduced resources, and more



### Increase productivity

Promote productivity with efficient planning, assembly, and shipment process management



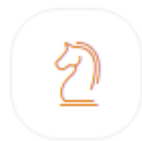
### Increase revenue

Experience increased revenue and global expansion with the ability to streamline business operations



### Full management control

Full management of business processes, from ordering, to distribution management and delivery services



### Make informed decisions

Take advantage of improved decision-making and lowered costs by proactively managing your business

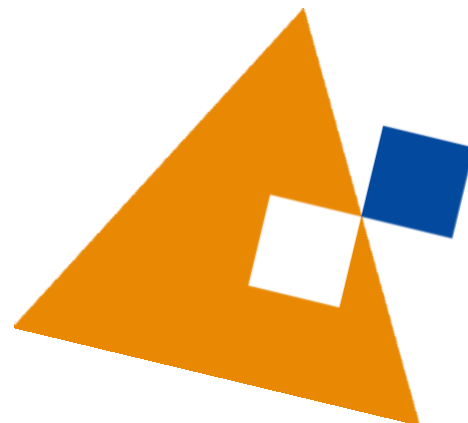
Give your customers what they need, when they need it, with the ability to pick, pack, and deliver goods on-time.





"Our company depends on the tight interrelationship of our IT systems with our business processes and having a single IT partner such as Reflex to provide a fully integrated end-to-end solution for all aspects of our business is one of the key drivers that keeps us ahead of the competition. The system provides support for head office accounting and administration with full auditability for routing key controls and logging as well as configurable dashboards for extensive reporting and management insight."

- Derek Currah,  
President and General  
Manager, Comco Pipe &  
Supply Company  
(division of Russel  
Metals Inc.)



# Distribution Features

## Order Management

- Quotations
- Order Entry
- Order Updates
- Order Inquiries
- Sales Processing and Management
- RFQs (Request for Quotation)
- Integrated Build for Order

## Inventory Control

- Inventory Movement
- Branch Transfers
- Inventory Maintenance
- Count Process Assistant
- Bar Code Scanning/RFID

## Warehouse Management

- Order Release
- Shipping
- Receiving
- System Manager
- RMA (Return Material Authorization)

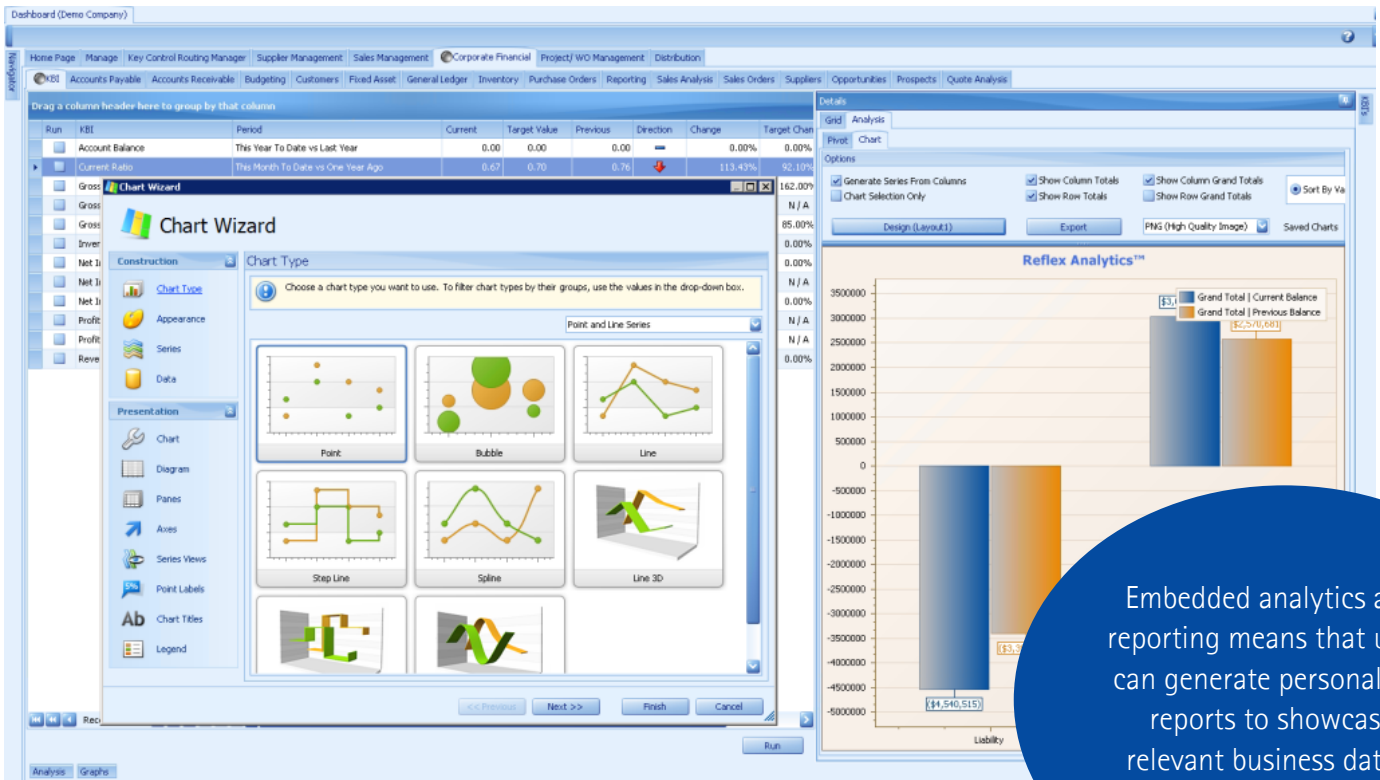
## Billings

- Progress Billings
- Point of Sale
- Up Charges

## Customer Portals

- Order Entry
- Order Status





Embedded analytics and reporting means that users can generate personalized reports to showcase relevant business data—anytime, anywhere.

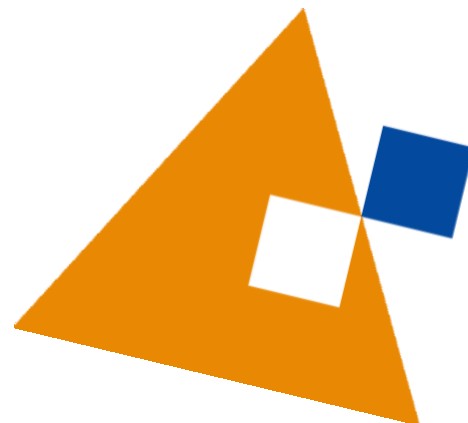
## Benefits of Reflex

Fully integrated data in a single authoritative data repository ensures that critical business information is consistent, controlled, accurate, and accessible.

Likewise, Reflex's template-based design means that all screens and functions have the same look and feel for end-users. Security and audit are configured in one place, and apply comprehensively and consistently across all modules and functions.

Common features such as reporting and analytics, workflow, and document management are embedded into the design of all Reflex modules. These functions appear naturally and consistently within menus, screens and processes across the entire Reflex solution.

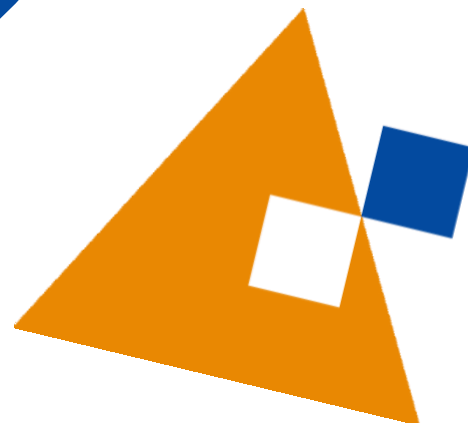
Experience the next generation of ERP with Reflex's mobile functionality, web portal access, intelligent alerts, and embedded analytics.





"We now have an appreciation of the value of true master data management as we are able to look at real time data anytime and anywhere and turn it into the information we need to run our company and serve our clients in the most effective manner. Reflex solutions are designed to fit the way we do business and offer extensive personalization without the need for custom development. In addition to enjoying the benefits of having one fully integrated ERP solution with no "bolt-ons," we have also implemented the Reflex embedded document manager that has allowed us to achieve a 99% paperless office environment."

- Michel Leroux, Vice President and General Manager, Summit Valve and Controls Inc.



Visit  
[ReflexERP.com](http://ReflexERP.com)  
or call us at  
1.780.451.4596 to learn  
more about Reflex  
Distribution today!

#### Reflex Distribution

Reflex Enterprise Solutions Group Inc.  
#101, 10423 178 Street | Edmonton, AB T5S 1R5  
1.780.451.4596 | [www.ReflexERP.com](http://www.ReflexERP.com)

©2016 Reflex Enterprise Solutions Group Inc. All rights reserved. Reflex, the Reflex logos, and the Reflex product and service names mentioned herein are registered trademarks or trademarks of Reflex Enterprise Solutions Group Inc.

